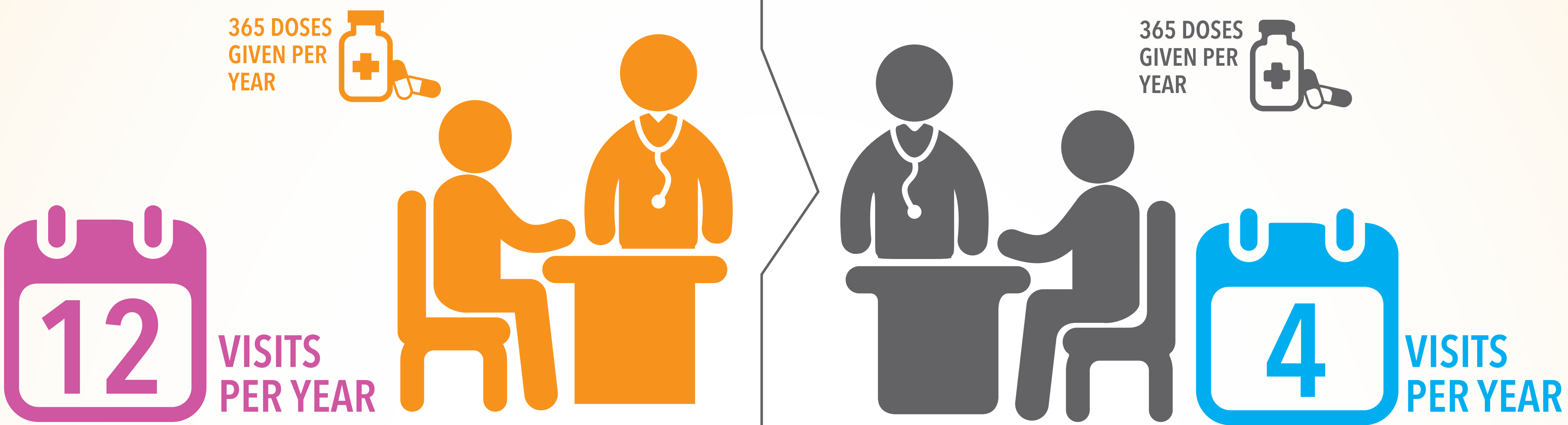


THE ZAMBIAN NATIONAL ART GUIDELINES RECOMMEND 3-MONTH ART REFILLS FOR STABLE, ADULT PATIENTS.

ONE MONTH REFILLS VS THREE MONTH REFILLS



• GIVING STABLE PATIENTS 3-MONTH REFILLS CAN:

- i) HELP REDUCE CLINIC CONGESTION , SO YOU CAN PROVIDE MORE CARE TO THE PATIENTS THAT NEED IT
- ii) HELP REDUCE YOUR WORKLOAD, BY REDUCING THE NUMBER OF TIMES THE SAME PATIENT COMES TO THE PHARMACY IN A YEAR
- iii) HELP IMPROVE PATIENT SATISFACTION, BY STREAMLINING SERVICES

• 3-MONTH REFILLS SHOULD NOT CAUSE STOCKOUTS, BECAUSE PATIENTS RECEIVE THE SAME NUMBER OF PILLS OVER TIME. AT THE BEGINNING, FACILITIES MUST PLAN FOR ADDITIONAL STOCK AS PATIENTS ARE TRANSITIONED TO 3-MONTH REFILLS.

PHARMACY STEPS FOR DETERMINING REFILL LENGTH

STEP 1: Is There Sufficient Stock For At Least 5 More Clinic Days?

YES

NO

STEP 2A: Did The Provider Prescribe A 3-month Refill?

STEP 2B: Alert The Facility In- Charge And Quality Improvement Officer Immediately.

YES

NO

STEP 3A: Provide 3-month Refill.

STEP 3B: Does The Patient Seem To Be A Stable Patient?

Criteria: Over 18; on current 1st line treatment regimen for at least 6 months; no opportunistic infections in last 3 months

YES

NO

STEP 4A: Alert Prescriber So File Review Can Be Conducted.

STEP 4B: Give As Prescribed

